

RECHARGEABLE HEADLIGHT ENG



HL-EL550GV RC
GVOLT45™

Manual ~~~ K 2032

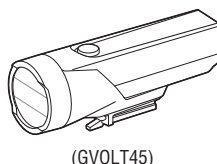
Before using the light, read this manual thoroughly and keep it for future reference. Do not use the light in any way other than as described in this manual.



Design Pat. Pending
Copyright© 2022 CATEYE Co., Ltd.
HLEL550GVRC-220131 1

Included Items

Light unit



(GVOLT45)

FlexTight™ bracket



(H-34N)

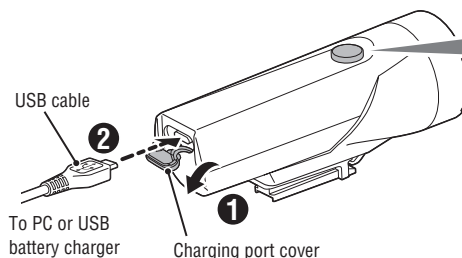
Required Items

Please prepare a USB cable 2.0 (Micro B) or later that can be used for charging (sold separately) before using this product.

Genuine CATEYE
optional accessory

5342730
USB cable

1 HOW TO CHARGE



To PC or USB
battery charger

Charging port cover

Switch (indicator)	Charging status
Constant red light	Charging
Off	Charging is completed

Standard charging time

Approx. **6.5 h** (0.5A)

⚠ CAUTION!

- **Always charge the product before use.**
- **Attach the charging port cover securely to ensure waterproofness.**
 - * When your PC is in sleep state, the unit cannot be charged.
 - * Using a PC or USB battery charger with an output current of 0.5 A or more is recommended for charging.
 - * Charging and lighting times are approximate values, and will vary by environmental and user conditions.

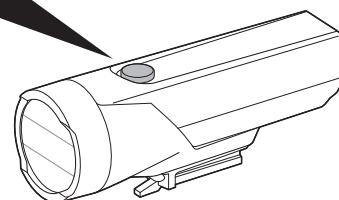
2 SWITCH OPERATION

Switch (indicator)

Press and hold
OFF ← → **ON***1

*1 When turning the light on, it lights up in the mode that was used the last time. (Mode memory function)

Switching the lighting mode



Remaining battery capacity:

When the switch (indicator) is illuminated in red, the remaining battery power is 20% or less.

- * Charge the product as soon as possible, as the brightness will no longer conform to German Road Traffic Ordinance (StVZO) in this condition.

⚠ WARNING!!! (Risk of death; Prevention of accidents)

- Do not look directly at the light source. In addition, when mounting the light unit, ensure that the light will not dazzle other road users.
- Please make sure the light is firmly mounted to the bracket and it lights up properly before each ride. The light must not be obscured.
- Always attention to the remaining battery power by checking the indicator periodically while using.
- Do not disassemble or modify the light or any of the included items.

⚠ CAUTION! (Prevention of injury, damage, or property damage)

- Operating the light while riding is dangerous. Always ride safely.
- Note that the light becomes hot while illuminated. Do not block the lens or cover the light.
- Due to the variability of LEDs, the color and brightness may differ even between devices with the same model number.
- Do not place it within children's reach.
- Carrying a spare headlight is recommended in case the battery runs out.
- When used with a cyclocomputer, attach the headlight as far away from the cyclocomputer as possible, as it may affect measurement.
- This device is rated IPX4 based on JIS C0920. Do not immerse the device in water. Doing so may cause a malfunction. Wipe off any moisture after using the device in rainy weather.
- Do not subject the light to strong vibrations, impacts, or excessive force. Discontinue use if any abnormality occurs.
- Do not charge or use the battery at any voltage or polarity other than that specified. Do not short-circuit the battery.
- Do not drop the light into a fire or heat the light.
- If the light unit or parts become dirty with mud, etc., clean with a soft cloth which is moistened with mild soap. Never apply paint thinner, benzine or alcohol; damage will result.

⚠ LITHIUM-ION BATTERIES

Recharge the battery for first time use or after long period of storage:

The voltage of the battery may drop due to self-discharge during long period of storage. Always fully charge the battery before use.

Cautions for charging and usage:

- Please be sure that no dust or other foreign objects are attached to the plug of the USB cable before charging.
- Do not subject the light to vibrations while charging.
- Once charging is completed, be sure to disconnect the USB cable from the charging port.
- Charging, discharging, and storing in high temperatures will cause the rechargeable battery to deteriorate faster. Do not place the light inside a vehicle or near a heater. Make sure to charge only when the ambient temperature is between 41°F and 104°F (5°C and 40°C).
- If the illumination time is significantly reduced even after proper charging, the rechargeable battery may be nearing the end of its service life.

Cautions on storage:

- If the device will not be used for a long period of time, store it in a location that is not too hot or too humid.
- Charge the battery for about 30 minutes every 6 months.

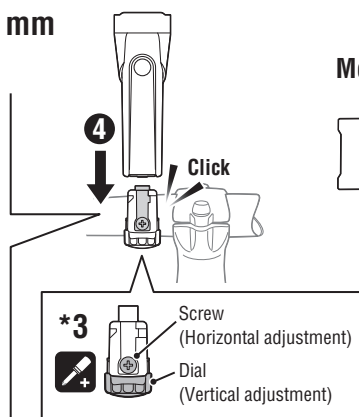
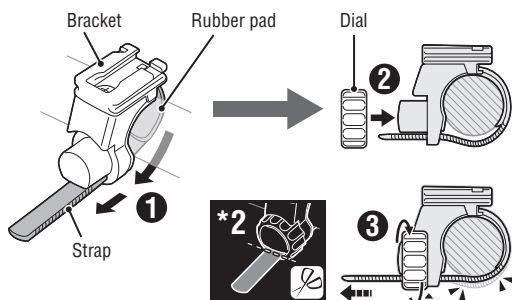
Cautions for dispose:

When disposing the light unit, please do so in accordance with your local regulations.

3 HOW TO MOUNT TO A BICYCLE

Ø22 – Ø35 mm

Mounting height: 400 – 1200 mm



Mounting

Removing

Slide out the light while pressing the release button.

1. Mount the bracket to the handlebar. (Fig 3 ① – ③)
2. Insert the light unit into the bracket until it clicks, and adjust the beam angle. (④) *3, *4
3. To remove the light unit, pull out it forward while pressing down on the release button (⑤).

⚠ CAUTION!

- Be sure to tighten the dial by hand. When you tighten it too hard with a tool, the screw thread may be stripped.
- Round off the cut edge of the bracket strap to prevent injury. *2
- Check the dial and screw (*3) on the bracket periodically, and use them without any loosening.

*4 Adjusting the lighting angle



When mounting the light unit, ensure that the light will not dazzle other road users.

To adjust the angle, loosen the dial or the screw (*3) to the point that the bracket moves slightly, make the adjustment, and then tighten the screw to fix the light unit in place.

SPECIFICATIONS

Light source	High-intensity LED x 1
Battery type	Li-ion 3.6 v - 2600 mAh
Charge terminal	Micro B USB
Operating time	High : Approx. 6.5 hours Low (Eco) : Approx. 25 hours * Average runtime at 68°F (20°C).
Standard charging time	Approx. 6.5 hours (0.5 A)
Charge voltage	5 v
Temperature range	Charging : 41°F – 104°F (5°C – 40°C) Operating : 14°F – 104°F (-10°C – 40°C)
Recharge/discharge number of times	About 300 times (until the rated capacity drops to 70%)
Waterproof	IPX4
Dimensions/Weight	1-27/64" x 4-11/64" x 1-47/64" (36 x 106 x 44 mm) / 3.23 oz (91.5 g) (Light unit only)

* The specifications and design are subject to change without notice.

Standard accessories

5338827N

FlexTight™ bracket



(H-34N)

Optional accessories

5340920

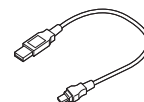
Bracket spacer



(H-37)

5342730

USB cable



(MICRO USB)

LIMITED WARRANTY

2-year Warranty: Light unit only (excludes battery deterioration)

CatEye products are warranted to be free of defects from materials and workmanship for a period of 2 years from original purchase. If the product fails to work during normal use, CatEye will repair or replace the defect at no charge. Service must be performed by CatEye or an authorized retailer. To return the product, pack it carefully and enclose the warranty certificate (proof of purchase) with instruction for repair. Please write or type your name and address clearly on the warranty certificate. Insurance, handling and transportation charges to CatEye shall be borne by person desiring service.

CATEYE CO., LTD.

2-8-25, KUWAZU, HIGASHI SUMIYOSHI-KU, OSAKA, JAPAN 546-0041

For inquiries, please visit <https://cateye.com/intl/contact/>